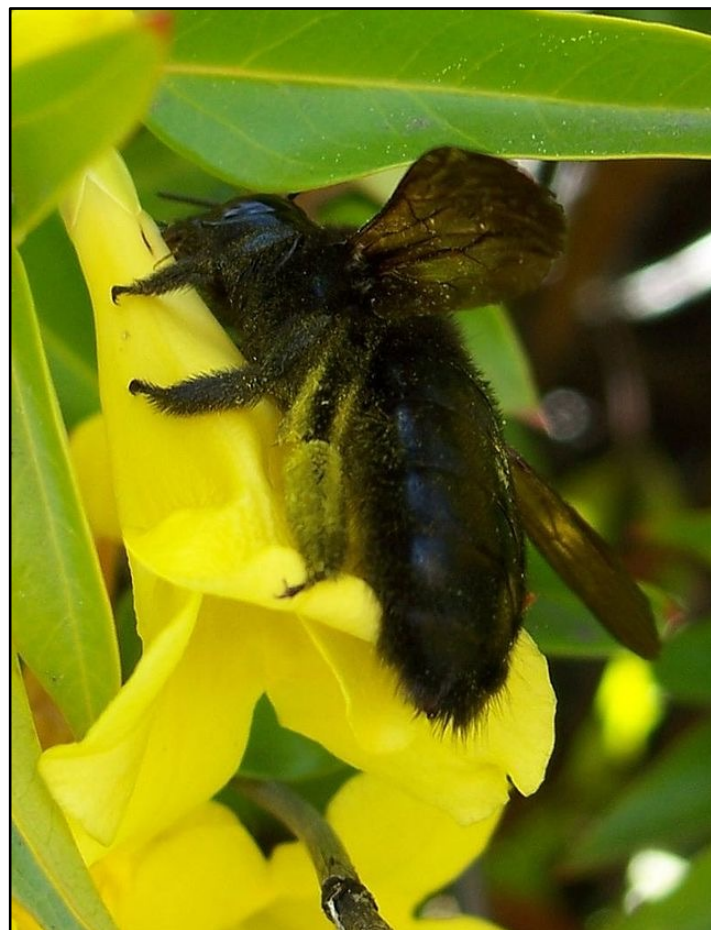


Xylocopa varipuncta
Valley Carpenter Bee

Why Observe?

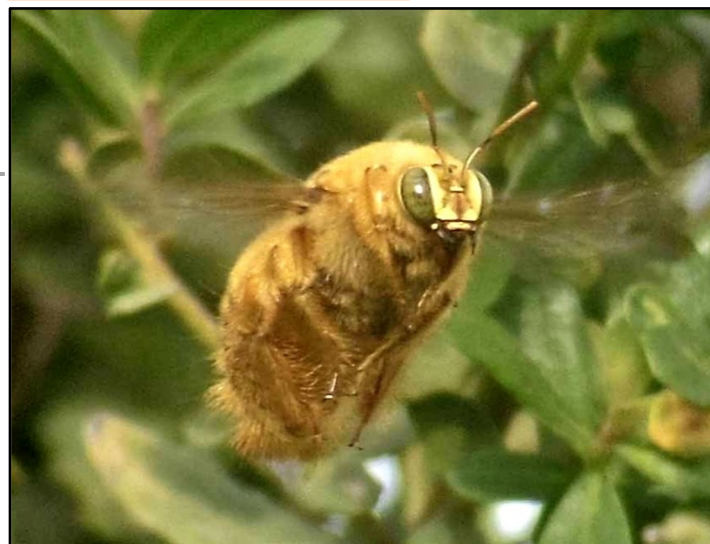
Carpenter bees are important native pollinators in the Sonoran Desert. They build nests by creating holes in old wood and pithy woody plants, where they will store pollen, lay an egg, and then seal up the hole with wood chips. Males gather together in groups called “leks” during breeding, releasing pheromones so that females can find them and choose a mate.



[Eugene Zelenko via Wikimedia](#)
[GNU Free Documentation License](#)

Tips for Identification

These bees are unusually large at about an inch long, round, black and shiny. Few hairs on the abdomen. Males are a golden-blond color with green eyes.



[K K Schneider via Flickr CC BY-NC 2.0](#)

Be aware there is variation from individual to individual within a species, so your animal may not look exactly like the one pictured. If you are uncertain whether or not a phenophase is occurring, report a “?” for its status until it becomes clear what you are observing after subsequent visits.

Xylocopa varipuncta
Valley Carpenter Bee



Active Adults

One or more adults are seen moving about or at rest.

[Robert Course-Baker via Flickr CC BY 2.0](#) (cropped)



Male Adults

One or more adult males are seen moving about or at rest. For *Xylocopa varipuncta*, males are fuzzy and gold in color with green eyes, whereas females are completely black.

[Robin Agarwa via Flickr CC BY-NC 2.0](#) (cropped)



Flower Visitation

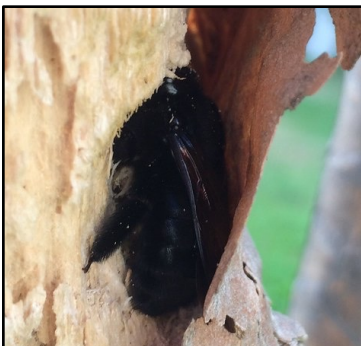
One or more individuals are seen visiting flowers or flying from flower to flower. If possible, record the name of the plant or describe it in the comments field.

[Viriditas via Wikipedia CC BY-SA 3.0](#) (cropped)



Mating

A male and female are seen coupled in a mating position, usually with the male on top of the female.



Nest Building

One or more adults are seen (or heard) chewing into wood to construct a nest.

[Scot Nelson via Flickr CCO](#)



Nest Provisioning

One or more adults are seen entering the nest with pollen. For *Xylocopa varipuncta*, pollen is carried between hairs on the hind legs and looks like bright yellow, orange or white "fuzz".

Phenophases not pictured: Dead Adults, Individuals in a trap