

*Agapostemon texanus*  
Green Sweat Bee

**Why Observe?**

Green sweat bees are important native pollinators for many wildflower and crop species. They are also important crop pollinators. These solitary bees build nests in soft soil where they will lay a single egg and provision the nest with pollen for the larvae to eat when they hatch.

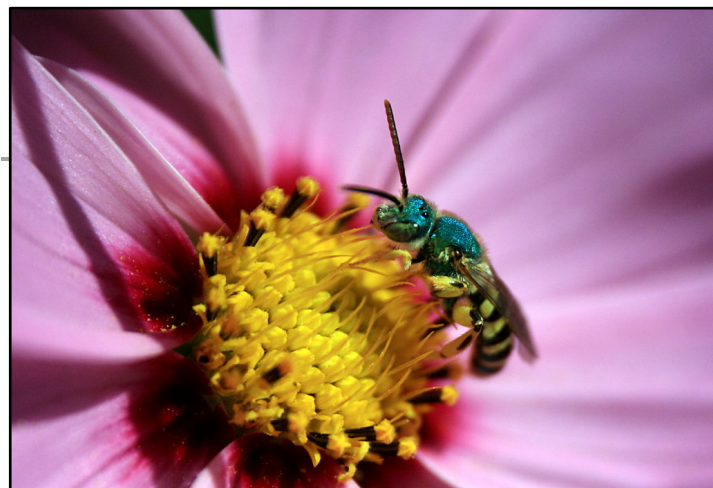
**Tips for Identification**

Females are a bright metallic green all over their body, while males have a green head and thorax, with a black and yellow striped abdomen. Green sweat bees carry pollen on their back legs.

Be aware there is variation from individual to individual within a species, so your animal may not look exactly like the one pictured. If you are uncertain whether or not a phenophase is occurring, report a “?” for its status until it becomes clear what you are observing after subsequent visits.



[Will Elder/NPS via Flickr](#). Public domain



[TJ Gehlig via Flickr](#). CC BY-NC-ND 2.0

*Agapostemon texanus*  
Green Sweat Bee



**Adults**

One or more adults are seen moving about or at rest.

[TJ Gehlig via Flickr.](#)  
[CC BY-NC-ND 2.0](#)



**Male adults**

One or more adult males are seen moving about or at rest. For *Agapostemon texanus*, males have black and yellow banded abdomen whereas female have a green abdomen.

[John Baker via Flickr.](#)  
[CC BY 2.0](#) (cropped)



**Flower visitation**

One or more individuals are seen visiting flowers or flying from flower to flower. If possible, record the name of the plant or describe it in the comments field.

[TJ Gehlig via Flickr.](#)  
[CC BY-NC-ND 2.0](#)



**Mating**

A male and female are seen coupled in a mating position, usually with the male on top of the female.



**Nest building**

One or more adults are seen digging into soil to construct a nest.



**Nest provisioning**

One or more adults are seen entering the nest with pollen. For *Agapostemon texanus*, pollen is carried between hairs on the hind legs and looks like bright yellow, orange or white "fuzz".

**Phenophases not pictured:** Dead adults, Individuals in a trap